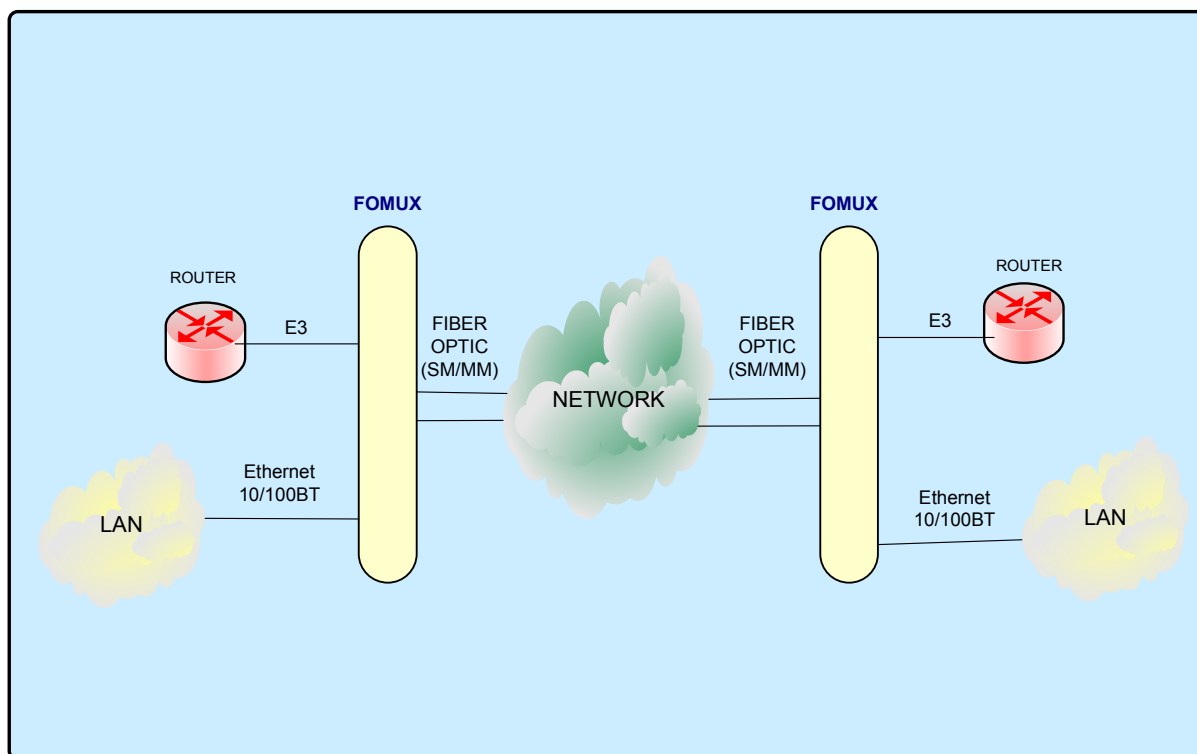




inoteska

DOCUMENTATION

FOMUX E3



Slovak Republic
INOTESKA, s.r.o.
P.O.BOX 6
Podtureň-Roveň 221
033 01 Liptovský Hrádok
☎ ++421 44 5221 809
Fax: ++421 44 5221 519
e-mail: sales@inoteska.sk
<http://www.inoteska.sk>

Czech Republic- branch office
INOTESKA - CT s.r.o.
Skalka 1692
560 02 Česká Třebová
☎ +420 465 533015
Fax: +420 465 531170
e-mail: administrativa@inoteska.cz
[Http://www.inoteska.cz](http://www.inoteska.cz)

CONTENTS

1. General description	2
2. FOMUX E3	3
3. Connector Ethernet 10/100 Base-T.....	3
4. Connector CONTROL	4
5. Technical parameters	5

1. General description

Name:	FOMUX E3
Type nomenclature:	ITX 471 11
Manufacturer:	INOTESKA, s.r.o., Podtureň - Roveň 221, 033 01 Liptovský Hrádok
Placement:	Supervised areas
Dimensions:	39 x 165 x 100 mm (h x w x d)
Operational conditions:	0° C to 55° C, 20% to 75% relative atmospheric humidity
Storage:	-10° C to 60° C, 20% to 75% relative atmospheric humidity

Basic parameters:

- **E3 BNC**
- **Interface Ethernet 10/100 Base-T**
- **Interface V.24 for multiplexer configuration from connected PC**
- **Remote control using Ethernet by allocating IP address**
- **configuration and supervision via TCP/ IP, UDP, HTTP**
- **Optical interface SC/PC (SM 1300 nm, MM 1300 nm)**
- **Management software Axx** (xx is number of management SW version)
- **Firmware Axx** (xx is number of firmware version)

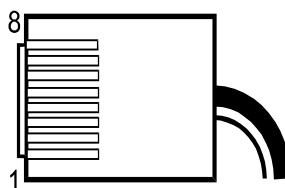
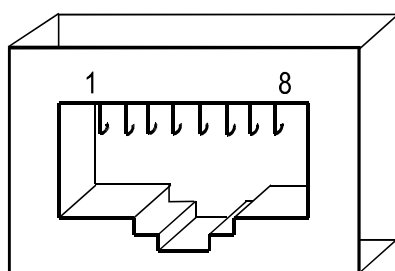
2. FOMUX E3

Fomux E3 is a device which uses the optical line for connection of two E3 routers (electrical interface E3) and Ethernet 10/100 BT, Baud rate 45 Mbps.

The device is offered in Single mode or Multi mode version. Optical interface is equipped with SC/PC connector.



3. Connector Ethernet 10/100 Base-T

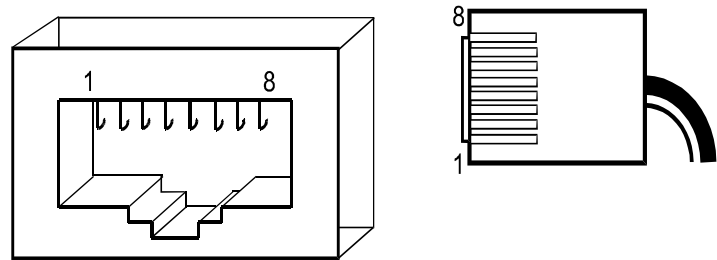


Ethernet 10Base-T (MDI port)

RJ 45

- | | |
|---------------------------------|------|
| 1 – Transmitting from ITX481 30 | Tx + |
| 2 – Transmitting from ITX481 30 | Tx - |
| 3 – Receiving to ITX481 30 | Rx+ |
| 4 – | |
| 5 – | |
| 6 – Receiving to ITX481 30 | Rx- |
| 7 – | |
| 8 – | |

4 . Connector CONTROL



V.24 Control
RJ 45

- 1 –
- 2 –
- 3 –
- 4 – Transmit from ITX Tx +
- 5 – Receive to ITX Rx+
- 6 – Receive to ITX Rx-
- 7 – Transmit from ITX Tx -
- 8 – GND

CANNON - Cable female D09F	RJ - 45
-	1
-	2
-	3
2	4
3	5
-	6
-	7
5	8
-	-

5. Technical parameters

Interface E3:	unframed E3 BNC connector (75 Ohm)
Interface Ethernet:	connector RJ45
Power supply:	adapter 230 V / 50Hz DC -48V
Max. input:	5 VA
Dimensions:	39 x 165 x 100 mm (h x w x d)
Weight:	0,8 kg