



inoteska

MUX E1 OVER ETHERNET



Product code:

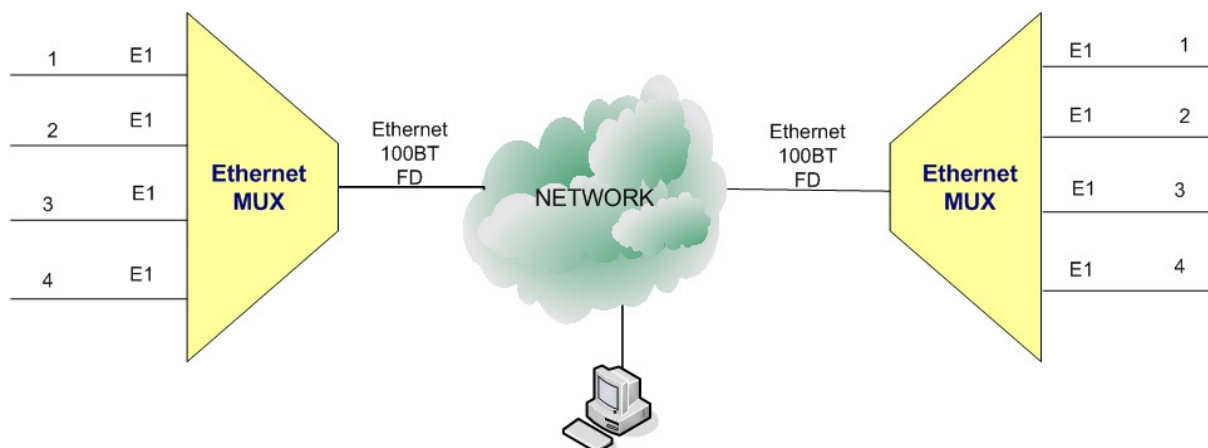
ITX 482 70 - MUX E1 over ETH (4 x E1)

ITX 482 71 - MUX E1 over ETH (8 x E1)

Features:

- Transmission of synchronous E1 interfaces via Ethernet 100 MB FD
- Synchronization must be set - E1, MASTER, Ethernet (paired device)
- Devices are paired using the MAC address
- E1 delay (latency) ≤ 5 ms
- Ethernet must be in mode 100 M Full Duplex
- Devices do not debug the packets lost
- E1 interfaces are unframed and transmitted transparently
- Configuration and remote control via TCP/ IP, UDP, HTTP

Applications:



Dimensions:

43.5 x 237 x 220 mm (h x w x d)