



inoteska

I-MUX

PRODUCT DOCUMENTATION



CONTENTS

1. PRODUCT OVERVIEW.....	2
2. SPECIFICATIONS.....	6
3. MANAGEMENT SW.....	13
4. SALES CONDITIONS.....	38

1. PRODUCT OVERVIEW

Product code:

ITX 482 47 - I-MUX 4 x E1 / Ethernet 10/100

ITX 482 48 - I-MUX 8 x E1 / Ethernet 10/100

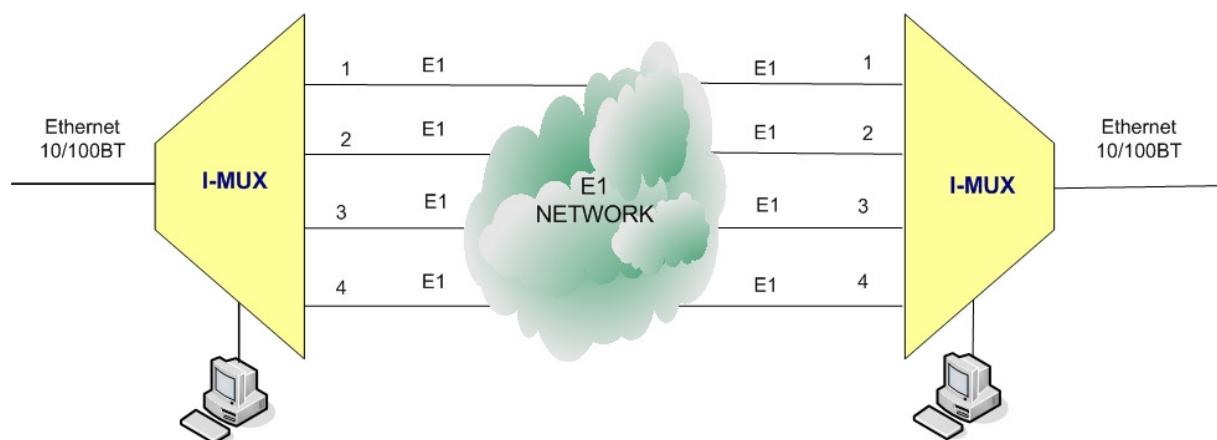
Features:

- Connects two devices (e.g. routers) with Ethernet interface
- E1 120 Ohm.
- Multiplexer synchronisation from E1 A – D / source of synchronisation.
- Ethernet 10/100 BT interface, used also for remote control by assigning of IP address
- Interface V.24 for multiplexer configuration from connected PC.
- Configuration and remote control via TCP/ IP, UDP, http, SNMP
- Multiplexer synchronization from E1 G.703/G704.
- Power supply AC 230 V resp. DC 48 V.

Warning:

- Delay between E1-A to E1-H can not be more than 4 frames (500 µs)
- It is not possible to change the order of E1 interfaces (E1-A only toward E1-A, etc.)
- Transmission should be made only by one path.

Applications:

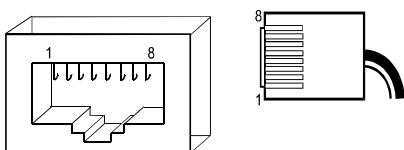


2.SPECIFICATIONS

E1 INTERFACE

- E1 unframed G.703 2048 kb/s
- E1 framed G.704 PCM 30, PCM 31
- Line code HDB 3
- Connectors: RJ 45 (120 Ohm) / BNC (75 Ohm)

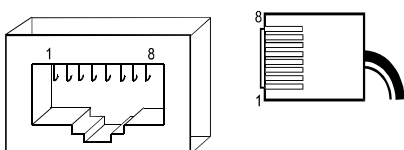
Connector RJ 45



1 – receive to device	-----	RX -
2 – receive device	-----	RX+
3 –		
4 – transmit from device	-----	TX -
5 – transmit from device	-----	TX+
6 –		
7 –		
8 –		

ETHERNET INTERFACE

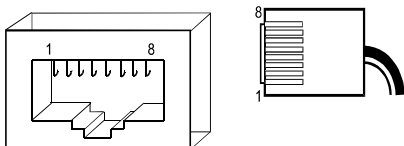
- Ethernet 10/100BT FD
- Connector RJ 45



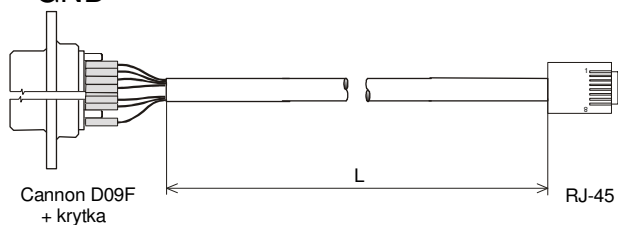
1 – transmit from device		Tx +
2 – transmit from device		Tx -
3 – receive to device		Rx+
4 –		
5 –		
6 – receive to device		Rx-
7 –		
8 –		

CONTROL V.24

- Connector RJ 45



- 1 –
- 2 –
- 3 –
- 4 – transmit from device Tx +
- 5 – receive to device Rx+
- 6 –
- 7 –
- 8 – GND



CANNON - Female for D09F cable	RJ - 45
-	1
-	2
-	3
2	4
3	5
-	6
-	7
5	8
-	-

L – cable length – standard 1 m

SYNCHRONIZATION

- User defined:
 - from E1 G.703
 - internal clock

INDICATORS

- **Front panel LEDs:**

E1 line - yellow – E1 interface not connected – loss of signal
 - green – E1 interface connected

- **Back panel LED:**

PWR - Power is ON

POWER

- AC 230 V \pm 10%, max. 0.3 A

INPUT

- Max. 5VA

DIMENSIONS

- 43.5 x 237 x 220 mm (h x w x d)

WEIGHT

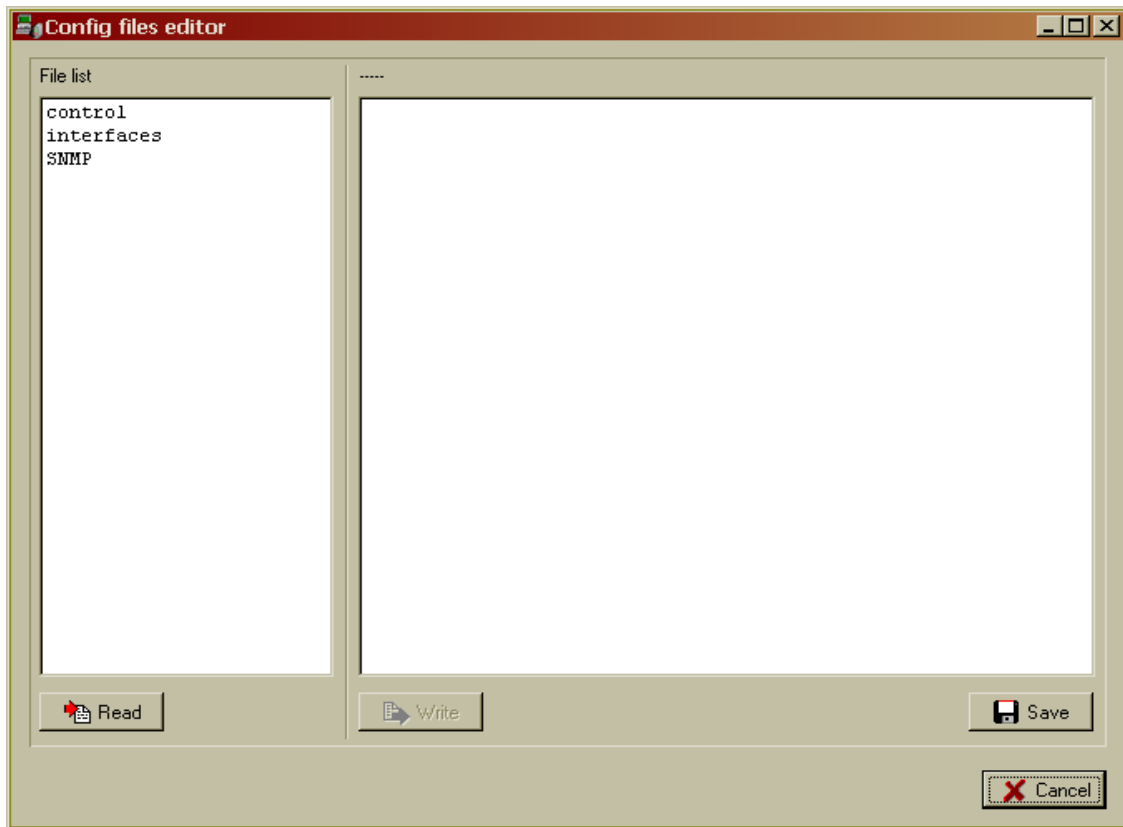
- Max. 2 kg

OPERATING ENVIRONMENT

- Operating temperature: 0° C to 55° C
- Storage temperature: -10° C to 60° C
- Humidity: up 75%, non-condensing

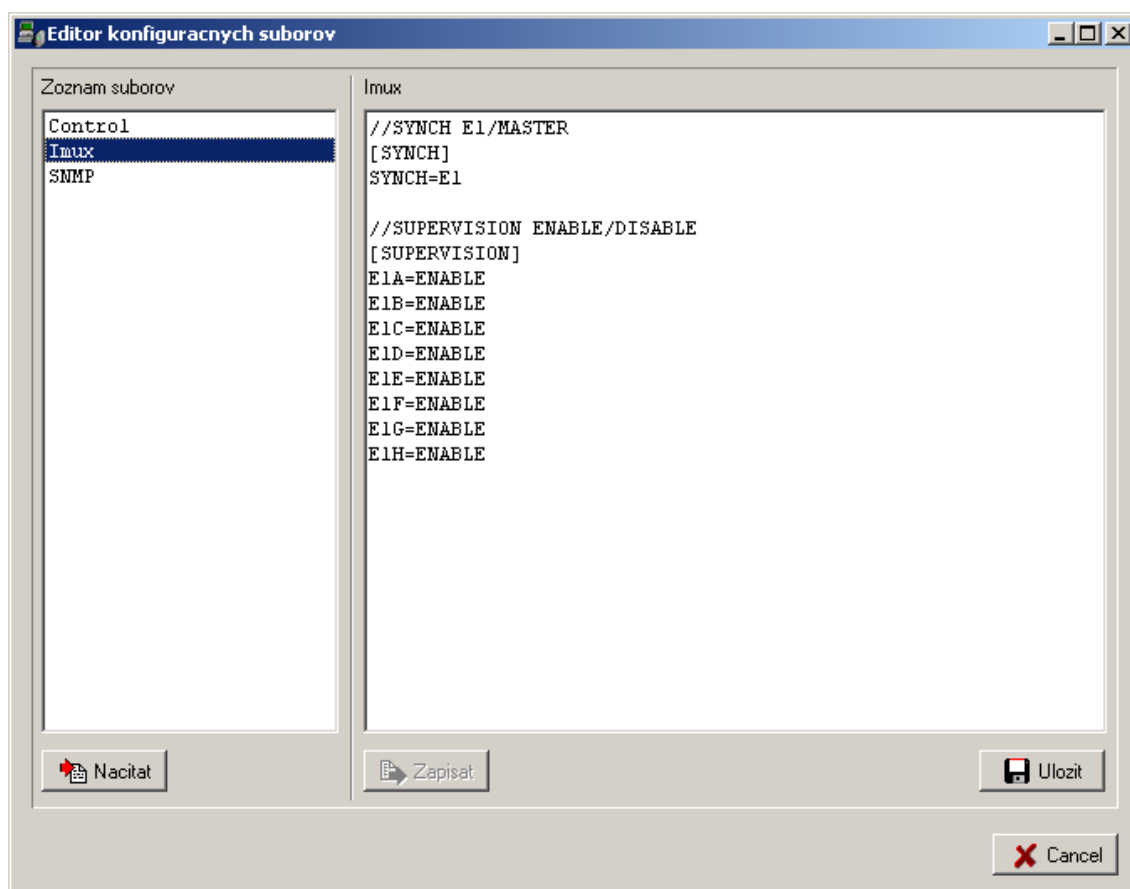
3. MANAGEMENT SW

Config files editor:



This window displays all the device network settings for the communication.

Parameters settings



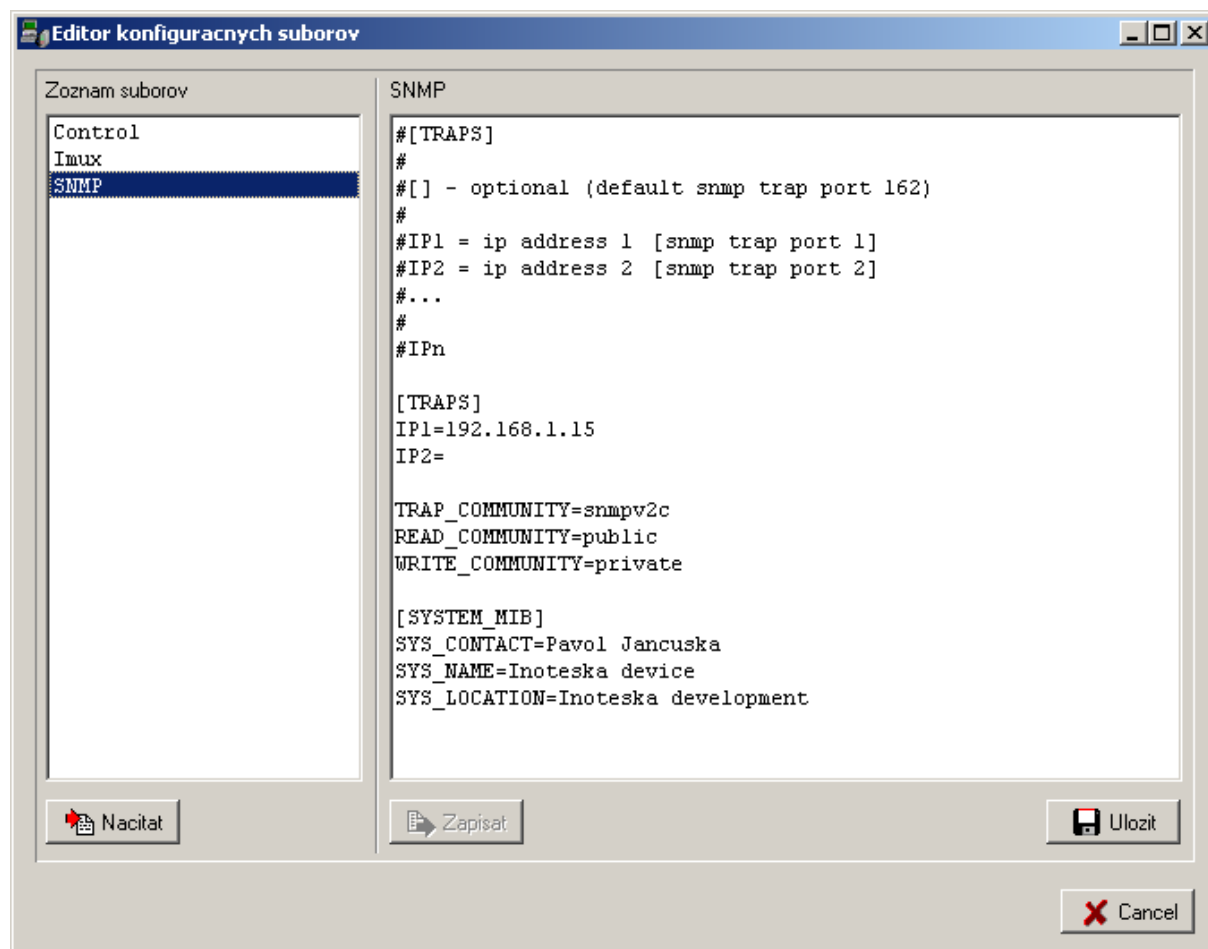
Synchronization settings:

Synch = E1 – device is synchronized from the first E1 line connected in the following order E1-A to E1-H.

Synch = Master – the device is source of synchronization and is controlled by its internal timing.

E1A to E1H – enable or disable of remote control of each interface.

SNMP parameters settings



Parameters:

Target IP addresses where the device has to send the traps **IP1 and IP2**

Trap community, Read community and Write community – settings according to the user network.

4. SALES CONDITIONS

Warranty:

Product warranty period is 24 months from the date of delivery or installation. Warranty does not apply in case of an accident, handling by a non-professional or improper use or force majeure.

Delivery:

Standard delivery time is max. 6 weeks from the signing of the purchase order or after mutual agreement.

Contact:**Inoteska s.r.o.**

Podtureň-Roveň 221

Liptovský Hrádok

033 01

Slovenská Republika

Tel.: + 421 44 5567911

Fax: + 421 44 5221 519

Hotline: + 421 902 774 538

Web: www.inoteska.sk

E-mail: mail@inoteska.sk

VAT no.: SK2020428300

Bank information: Všeobecná úverová banka a.s.

Account no.: 616243342/0200

SWIFT code: SUBASKBX

IBAN: SK3402000000000616243342

Sales department:

Ing. Ľubica Brtáňová 0903 826 079

Ing. Pavel Wolf 0903 800 133

Technical department:

Ing. Pavol Perdek 0903 519 908

Ing. Pavel Wolf 0903 800 133